

73H1729
UTM Northing: 5529377.783m
UTM Easting: 329961.856m
Datum: NAD83 (CSRS) 2002.0 UTM Zone 11
Absolute Accuracy: 0.03m

SPRINGFIELD ROAD
PLAN H12752

SRW PLAN EPP23793

SEC 23

ROAD
357.6m²

PLAN EPP23792

REM A
PLAN EPP23792

BELGO ROAD

SRW PLAN EPP23794

02H2362
UTM Northing: 5526007.665m
UTM Easting: 331708.391m
Datum: NAD83 (CSRS) 2002.0 UTM Zone 11
Absolute Accuracy: 0.03m

TP 26

REFERENCE PLAN OF PART OF LOT A SECTIONS 23 AND 24 TOWNSHIP 26 OSOYOOS DIVISION YALE DISTRICT PLAN EPP23792

PURSUANT TO SECTION 107 OF THE LAND TITLE ACT
BCGS 82E.084

SCALE 1:250



The intended plot size of this plan is 560mm in width by 432mm in height (C size) when plotted at a scale of 1:250.

LEGEND

- Found Standard Iron Post
- Placed Standard Iron Post
- ⊕ Found Control Monument
- ⊙ Found Non-Standard Post

Integrated Survey Area No. 4, City of Kelowna NAD83 (CSRS) 2002.0

Grid bearings are derived from GNSS observations and are referred to the central meridian of UTM Zone 11 (117° West Longitude).

The UTM coordinates and estimated absolute accuracy achieved are derived from dual frequency GNSS observations to CANNET Active Control Station BC_Kelowna.

The coordinates and absolute accuracies shown on this plan are a result of an independent and accurate GNSS survey and do not represent official published coordinates.

This plan shows horizontal ground-level distances, unless otherwise specified. To compute grid distances, multiply ground-level distance by the average combined factor of 0.9999910. The average combined factor has been determined based on an ellipsoidal elevation of 430 metres.

This plan lies within the Regional District of Central Okanagan.

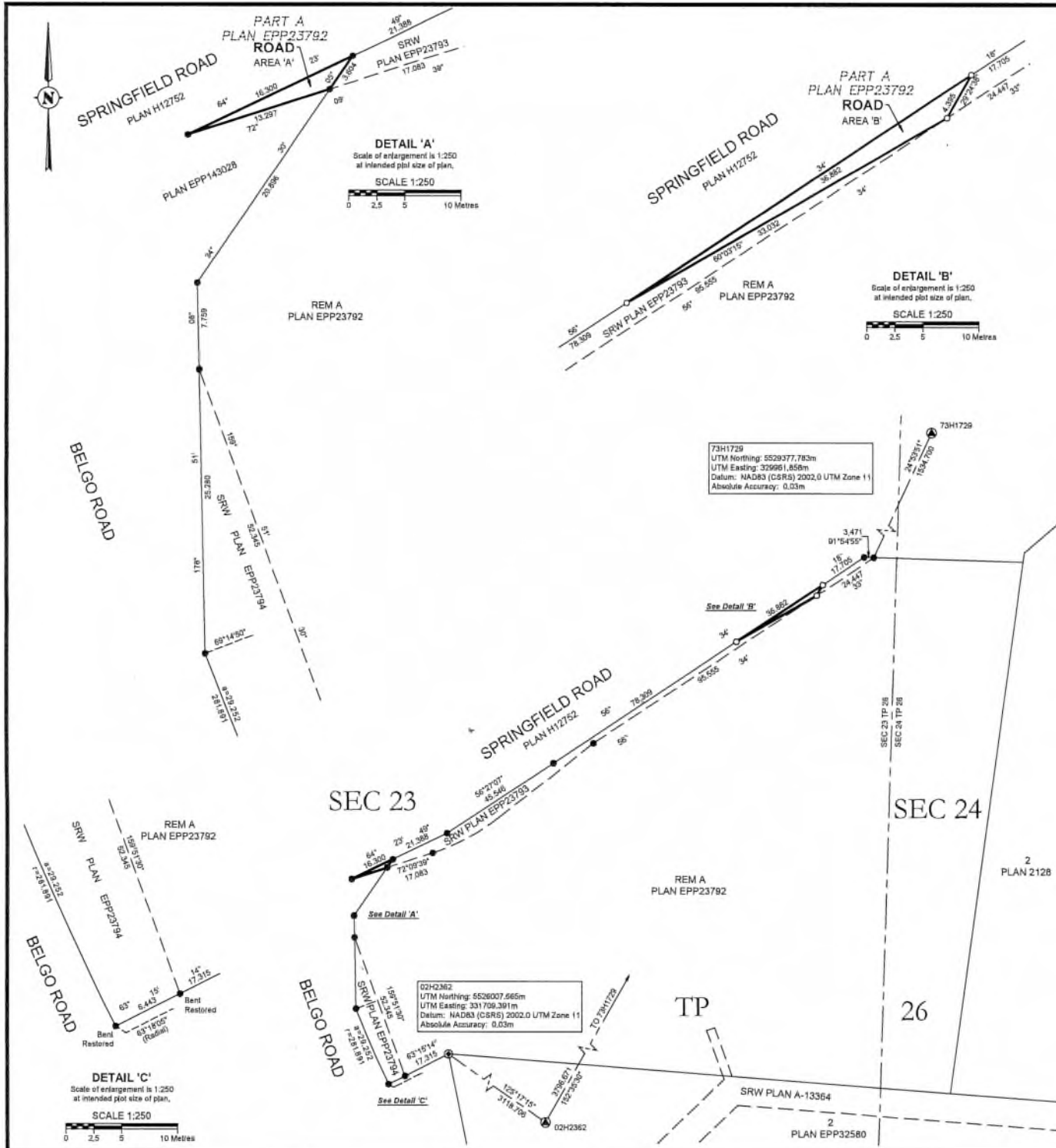
This plan lies within the Agricultural Land Reserve.

This plan lies within the jurisdiction of the Approving Officer for the City of Kelowna.

The field survey represented by this plan was completed on the 9th day of January, 2025.

Alexander Christian Dzielski, BCLS 1035

PLAN EPP147160



REFERENCE PLAN OF PART OF LOT A SECTIONS 23 AND 24 TOWNSHIP 26 OSOYOOS DIVISION YALE DISTRICT PLAN EPP23792 EXCEPT PLAN EPP143028

PURSUANT TO SECTION 107 OF THE LAND TITLE ACT
BCGS 82E.084

SCALE 1:1000



The intended plot size of this plan is 560mm in width by 432mm in height (C size) when plotted at a scale of 1:1000.

LEGEND

- Found Standard Iron Post
- Placed Standard Iron Post
- ⊙ Found Control Monument
- ⊙ Found Non-Standard Post

Integrated Survey Area No. 4, City of Kelowna NAD83 (CSRS) 2002.0

Grid bearings are derived from GNSS observations and are referred to the central meridian of UTM Zone 11 (117° West Longitude).

The UTM coordinates and estimated absolute accuracy achieved are derived from dual frequency GNSS observations to CANNET Active Control Station BC_Kelowna.

The coordinates and absolute accuracies shown on this plan are a result of an independent and accurate GNSS survey and do not represent official published coordinates.

This plan shows horizontal ground-level distances, unless otherwise specified. To compute grid distances, multiply ground-level distance by the average combined factor of 0.9998910. The average combined factor has been determined based on an ellipsoidal elevation of 430 metres.

This plan lies within the Regional District of Central Okanagan.

This plan lies within the Agricultural Land Reserve.

This plan lies within the jurisdiction of the Approving Officer for the City of Kelowna.

The field survey represented by this plan was completed on the 9th day of January, 2025.

Alexander Christian Dzielski, BCLS 1035

BOOK OF REFERENCE		
Legal Description	Description	Area
PART A PLAN EPP23792	Area 'A'	14.6m ²
PART A PLAN EPP23792	Area 'B'	37.0m ²
Total Road Dedication Area		51.6m ²